

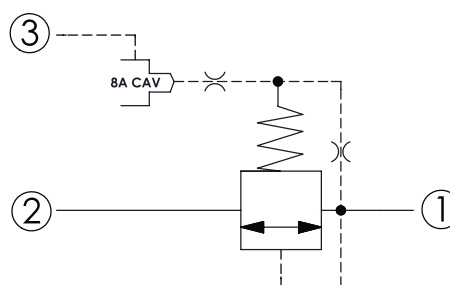
# CRV-19A - Relief valve

Ventable, balanced piston relief main stage with integral 8A control cavity

## 1 Available versions

Ordering example:

CRV-19A	-30	-D	-8
Type	Operation	Spring	



- 1 Inlet
- 2 Sequence
- 3 Drain

### Operation

Coding	Description
30	Standard type

### Spring

Coding	Minimum control pressure (bar)
D	1.7 (25 psi)
W	7 (100 psi)

### **i** INFORMATION

- W spring is suit for higher pressure drop application.

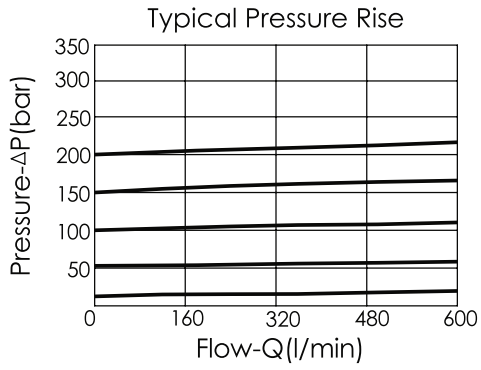
## 2 Technical data

Operating pressure $p_{max}$	350 bar
Flow rate $Q_{max}$	480 l/min
Installation torque	465 - 500 Nm
Cavity	T-19A (19AB-3)
Weight	1.19 kg

**i** INFORMATION

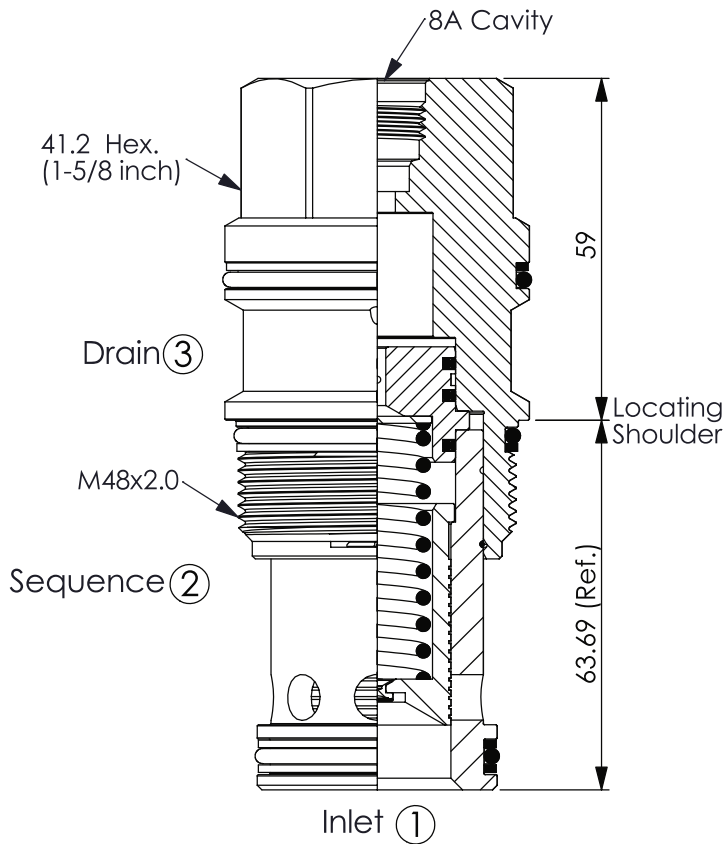
- Response time-typical (10 ms)
- Maximum leakage approximately 82 cm<sup>3</sup>/min/70 bar
- Will accept maximum pressure at port 2; suitable for use in cross port relief circuits.
- If used in cross port relief circuits, consider spool leakage.

**Characteristic lines**



**3** Dimensions

All dimensions in mm, subject to change.



## 4 Other information

see Technical information HAWE cartridge valves: D 8219

see Recommendation for hydraulic fluid: D 5488/1

